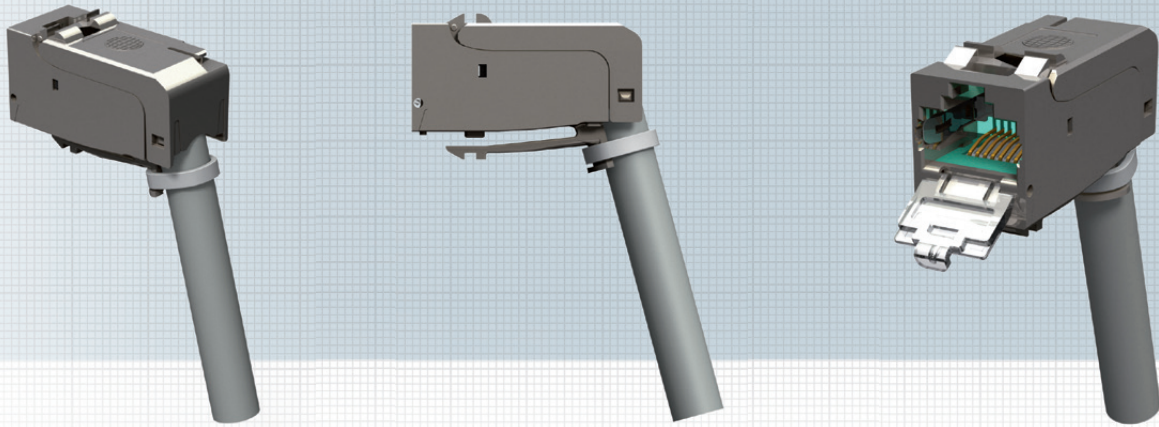


preLink® RJ45 Keystone Module

Cat. 6_A ISO/IEC, shielded, angled



The angled preLink® socket module was specifically designed for applications with minimal space requirements. With its 75° cable outlet, it is particularly suitable for use in data outlets and wiring cavities. A minimal installation depth of 27mm allows an almost unlimited variety of applications. The preLink® angled jack modules can also be used in conjunction with our multi-design capable data outlets, making combination with all common switch products possible. The preLink® RJ45 jack modules are used for simple latching onto the preLink® cable termination block. The complete unit that results from an assembled preLink® wiring section and the preLink® RJ45 Keystone module corresponds to a permanent link that conforms to ISO/IEC 11801 (EN 50173). The preLink® termination block is available in two versions: AWG24 to AWG22 for installation cable with up to four pairs (in transparent yellow), and AWG27 to AWG26 for flexible cables with up to 4 pairs (in transparent white). These two modules allow all data cable types to be connected. The new IDC contacts ensure long-term stable and vibration-proof contact in 10 Gigabit technology. The compact design of the nickel-plated, die-cast zinc socket module ensures high packing density. Packaging unit: 24 units per carton.

Standards:

Connector Standard IEC 60603-7-51

Mechanical Properties:

Installation dimension	19.3 x 14.7 mm
Mating force	≤ 30 N
Mating cycles (RJ45 side)	≥ 750
Mating cycles (opposite side)	≥ 100
Housing material	nickel-plated die-cast zinc
Insulation components material	PC aqua
Gold plating in contact area	50 μ"
Contacting	AWG 27-22; depending on the terminal used
Cable diameter	5 – 9.5 mm
Cable outlet	75°

Environmental requirements:

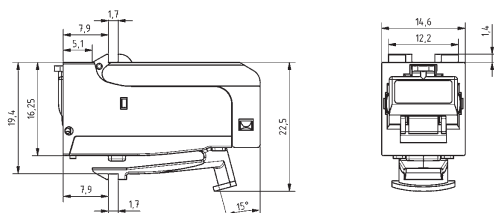
Connection class	IP 20
Temperature range	-40 °C ... +70 °C

Electrical properties:

Contact resistance	≤ 20 mΩ
Insulation resistance between contacts	≥ 500 MΩ
Dielectric withstanding voltage contact – contact	1000 V DC/AC peak
Dielectric withstanding voltage contact – screen	1500 V DC/AC peak
Current-carrying capacity at 50°C	1.25 A
PoE+ per IEEE 802.3at	PoE+

Transmission characteristics:

10 Gbit Class E _A	Supported
Cat. 6 _A GHMT	ISO/IEC 11801 AM1 and AMD2, Link length > 5 m
	ISO/IEC 11801 AMD2
	Link certification Class E _A with cable:
	- Draka UC 1500 Cat 7 _A
	- Draka UC 900 Cat 7
	Initial sample certified



Description

Ordering Code

preLink® RJ45 Keystone Cat. 6 _A ISO/IEC incl. cable terminal AWG 24 – AWG 22, Angled
preLink® RJ45 Keystone Cat. 6 _A ISO/IEC incl. cable terminal AWG 27 – AWG 26, Angled
preLink® RJ45 Keystone Cat. 6 _A ISO/IEC without cable terminal

CKWAS010
CKWAS020
CKWAO100